

INSTAL-SERVICE PL

Spółka z ograniczoną odpowiedzialnością
Spółka komandytowa

58-506 Jelenia Góra, ul. Wrocławska 15a

Switchgear type BPP2 – 2S3

for rated voltage 500V



Through connection block type BPP2/1U/1 is a device designed for use in underground mining pits in non-explosive coal dust conditions and on the ground.

Through connection block type BPP2/1U/1 is designed for connecting and distributing power in mine distribution three-phase grid with isolated star point transformer (IT system) for rated grid voltage of 500V and especially for manual switching to backup power source.

Wires are connected to the block via cable clamps through cable glands.

TECHNICAL DATA:

ingress protection	IP54
insulation rated voltage of main circuits	660 V
rated power supply voltage	3x500V, 50Hz, IT grid
rated current of the outlet	200A
number of outlets	2
dimensions	1330 x 550 x 350mm (H x W x D)

CONSTRUCTION

The through connection block is composed of a housing mounted on a frame construction, equipped with brackets. The frame construction allows the device to be hung on the pit wall.

MODE OF OPERATION

In 3x500V main circuit the through connection block is equipped with a three-position switch Q. Every position of the switch can be locked by putting a lock on the switches drive lever.

Through connection block is equipped with protection against low insulation resistance. On the face of block is situated indicating lamp which inform us about level of insulation resistance of outlet.

Blocks type BPP2–2S3 is designated to manual switching to backup power source.

SCHEMATIC DIAGRAM

Legend:

Zasilanie Podstawowe - **Main Power Supply**

Zasilanie Rezerwowe - **Backup Power Supply**

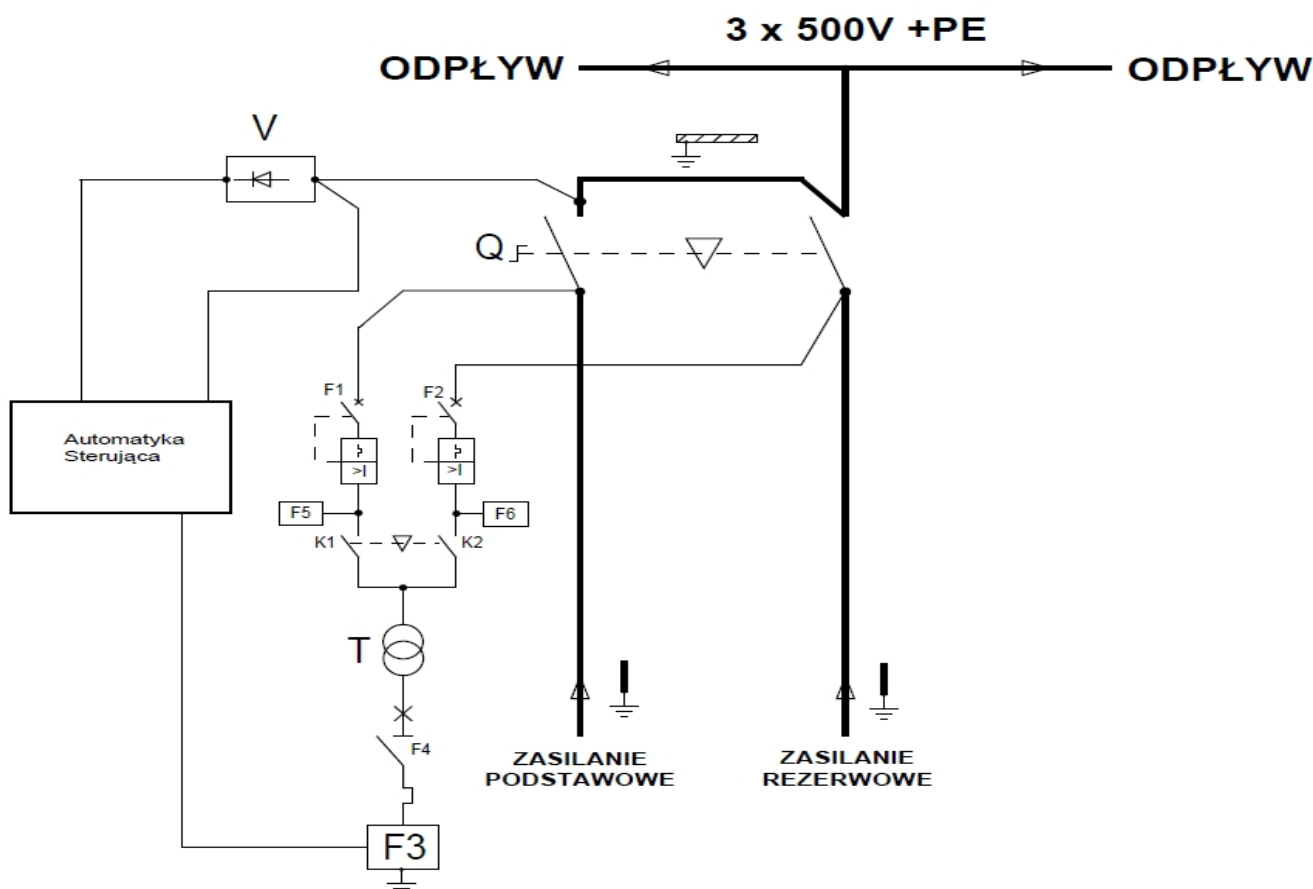
Odpyw - **Outlet**

Automatyka Sterująca - **Remote Control**

F5, F6 - **Undervoltage Protection**

F3 - **Insulation resistance protection**

Q - **Disconnecter**



Orders should be submitted in writing or by fax to the address:

 **Instal-Service PL**

Spółka z ograniczoną odpowiedzialnością
Spółka komandytowa
58-506 Jelenia Góra, ul. Wrocławska 15a
tel. (+48 075) 64-57-950
fax. (+48 075) 64-57-951
e-mail: instal@instal-service.pl